

East Budleigh with Bicton Parish News



All Saints Entrance Facelift- Photograph MHM

Issue: October 2023

Available online at
www.raleighmissioncommunity.org.uk/east-budleigh-parish-magazine



Gentle Dental Care

in Relaxed and Friendly Surroundings

General Dental & Referral Services

Now Budeigh Salterton's only independent family run dental practice

- Caring, everyday dental care for all your dental needs
- Dental Hygiene Team for a healthier smile and gums
- Mercury free white fillings as standard
- In house laboratory for outstanding lab work
- Dental Implants for missing teeth and problem dentures
- Denture repairs while you wait
- Reliable, friendly care with appointments from 9am



Referral services for complex treatment available to both self-referring patients and referrals from other dentists
www.ashburydentalcare.co.uk/referrals

Don't be embarrassed or nervous, contact us today to register as a patient or book a free consultation to see how we can help you.

01395 444 432

Visit our new website to find out more about the services we offer.

www.ashburydentalcare.co.uk

Ashbury Dental Care - 53 East Budeigh Road - Budeigh Salterton - EX9 6EW

October View from the Vicarage ...

Dear friends,

This time of year, it is traditional for churches to hold Harvest Festivals. I say “traditional” but Harvest Festivals, as we know them, are actually just a nineteenth century innovation in this country.

But they are based in one of the most primal instincts of mankind – to give thanks for the bounty and beauty of the earth. This chimes very neatly with the more modern concerns around climate change and ecology and biodiversity more generally.

Bigger questions concerning how far and fast we should be moving towards net-zero carbon emissions are more political questions upon which we will all no doubt have an opinion, but can be divisive in the extreme, so I feel the church’s stance should be to celebrate what is good, extol the beauty of the earth, and aspire to a cleaner future, which is pretty uncontroversial.

For who hates and fights against cleanliness, clean air, sustainability, and harmony? That’s what everybody wants, but we are great at creating groups of people who want to fight and oppose each other, instead of finding common ground. It is questions over the rate of change and setting in place infrastructure to support those changes without impoverishing the already poor that sets people against each other.

Extremists on both sides, climate change sceptics and climate change catastrophists set the agenda, while most of us look on and veer towards one side or the other.

Human vanity has an effect here. We think we are the centre of the universe and therefore everything is our fault and therefore we are the only ones who have a solution.

Theists of all religions have a different perspective of course. However large or small the human factor may be in the climate change debate; we know that we are not the centre of the universe. We are a creation so therefore we have a creator, and He is the centre of the universe.

Martin

The entrance to All Saints has recently had a facelift as shown on the front cover. We hope you like the new look. The gate at the Yettington Road entrance is also being refurbished and will be replaced as soon as possible.

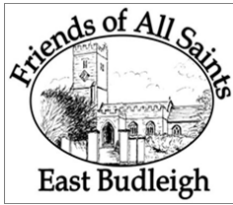
**Pastoral
Care**



If you know of anyone vulnerable or living alone - whether they come to church or not - who would appreciate being contacted, please phone the Raleigh Mission

Community Pastoral Team Leader - Jenny Steele on 443133 or Lynda Bunting from All Saints, East Budleigh on 446731.

All information, advertised or provided, is accepted in good faith as being correct at the time of going to press. Opinions expressed in the magazine are not necessarily those of the publisher and editor. The publisher accepts no responsibility for products, goods or services that may be advertised or referred to. No part of this publication may be reproduced, in any form, without the prior express consent of the publisher.



Friends of All Saints East Budleigh

The Friends of All Saints welcomed the Budleigh Male Voice Choir again this summer to perform at a Cream Tea concert up at the Church Hall. Yet again, the sun shone down on us, though not with quite the intensity of last year. However, our audience came prepared with sunhats and sunglasses and enjoyed the afternoon filled with a great performance and a hearty cream tea. This event enabled us to raise almost £900 towards the upkeep of our beautiful church. Thanks to all for their support!

Plans are now afoot to use some of the funds we have raised to improve the lighting around the church area, making it safer for all the visitors through the darker evenings. We will keep you updated with progress.

Look out for details of further events in the next edition of the magazine, or on posters around the village and don't forget, it is never too late to enter the 200 Club draw – now only £3 for the rest of the year.

Another View from the Vicarage ...

Martin's essay for September did not arrive in time for the joint August/September issue, but it is a lovely observation on life - worth reflecting on at any time of year - so we include it here.

Ah...September. When I hear that word I immediately think of the "Earth, Wind and fire" classic song.....or is that just me? Then I remembered another song about September that I remember from my youth. My mum was a huge Frank Sinatra fan, and I remembered one of Frank's old classics called the September song. A melancholic and haunting song that equated the month, September, with a time in a person's life, when you are getting older and know you are running out of time. I feel a bit like that myself, but in Frank's song that also means that each day, each moment, is more precious to you because you realise that your time here on earth is not eternal and you are not indestructible like young people assume themselves to be.

Those things are positive developments and are the reason that older people are generally considered wiser than the young. Hopefully, as we enter the September of our lives we are more experienced and have learned through the school of hard knocks, how unfair and cruel the world can be sometimes, and we learn that a little humility goes a long way.

Hopefully, as our memories get worse and our ambitions become fewer and more realistic, the sharp corners of our personalities are ground a little smoother and we are content with smaller but more important wins in life. Family, friends, grandchildren, nieces and nephews and their well-being is more important than landing that new job or shiny new car.

You become more reflective and reminisce about the past more and more, and again hopefully, can use the experiences of the past to learn how to avoid making the same mistakes and make better choices in the present.

Youth does have its advantages of course like energy, ambition and a stronger constitution, but I personally wouldn't swap what I know now to regress to my younger days. Buddhists say that resistance to the realities of life, resistance to what you cannot change, is the main cause of all psychological suffering. I tend to agree. Embrace September.

Love and peace, Martin

Friends of All Saints 200 Club Raffle

The Friends of All Saints, East Budleigh, invite you to join our 200 Club Raffle with a chance of winning a monthly cash prize (£40 first, £20 second and £10 third prize). We hope you might find it fun to be in with a chance to win back your annual investment and maybe more or, perhaps, you might like to buy tickets as gifts for friends or family!

Just send your name, address and telephone number together with payment to the address below:

1. with a cheque for the remainder of the year of £3 made payable to 'PCC All Saints East Budleigh'
or
2. Tick the box to confirm payment by direct bank transfer (BACS). The account details are:

Account Name: PCC All Saints East Budleigh

Sort code: 30 94 36

Account Number: 00601276

Reference: 200 Club



NAME:

ADDRESS:

PHONE:

E-mail address:

Signature:

Return to: Angela Canning, Membership Secretary of the Friends of All Saints Church
East Budleigh, c/o Stores Cottage, 14 High Street, East Budleigh, EX9 7DY

200 Club Winners

August

1st - M. Coulthard 2nd - A Newall 3rd - S. Pye

September

1st - M. Withers 2nd - M. Lester 3rd - R. Letten

Next edition of the Parish News

Please send items for the next edition of the magazine covering November 2023 to:

ebmag.as@rmcommunity.co.uk

by 6pm on Friday 20th October 2023



CAPITAL

PLUMBING & HEATING SERVICES

- Central heating & plumbing specialists
- Installations – Repairs – Servicing
- Boiler Replacements
- Gas Safety Inspections/Certification
- Established 1999
- 27 years experience
- Free estimates
- 10% discount on servicing of boilers on receipt of this advertisement

**01395 443622 or
07977 238009**

www.capitalplumbingandheating.co.uk

Vicarage Road, East Budleigh



GENERAL YOGA CLASSES

WITH NICKY HARDY

at

EAST BUDLEIGH CHURCH HALL

EVERYONE WELCOME!

JOIN US TO REDUCE PHYSICAL AND
MENTAL STRESS

**WEDNESDAYS, FRIDAYS
AND SATURDAYS at 10am**

I have been studying & teaching yoga for more than 15 years, and am a fully insured member of the British Wheel of Yoga

For more information please contact Nicky on 01395 568 906 or exhale_yoga@yahoo.co.uk

East Budleigh Tennis Club

The Recreation Ground, Vicarage Road,
East Budleigh

An all-weather court in a delightful setting is available to members of the club for an annual fee of
£20 adults
£10 juniors
£45 Family
or Play and Play £10 per hour

New Members and Visitors Welcome
For court bookings and membership go to our website

<https://www.parkhilltennisclub.co.uk/East-Budleigh-Tennis-Club>

S Cox & Co Construction

**A local Family owned and operated
construction company With over 30
years of experience.**

**(01395) 445764
07717855264**

info@scoxandco.com

www.scoxandco.com

EAST BUDLEIGH WITH BICTON WOMEN'S INSTITUTE

Our last meeting was in August, which seems a long time ago! Our President Diana treated us to a cookery demonstration – how to make a Parsnip and Maple Syrup Cake. We also tried our hands at making decorative apple roses. Luckily for us, Diana produced one she had made and baked earlier for us to try – it was delicious, and won over those who didn't think they liked parsnip.

Our next meeting is in the Village Hall on Thursday 12th October at 2pm when Kay Castleman will talk about “Life behind the Side Shows”.

Meetings are on the second Thursday of each month in East Budleigh Village Hall at 2pm and finish around 4pm. We are always happy to see visitors, so do come along and enjoy a meeting with us.

If you want to find out more about our WI then please contact our President Diana Humphreys by phone 07768 529352, email eastbudleighwithbicton@devonwi.org.uk or look at our website:

<https://eastbudleighwithbictonwi.org>

EAST BUDLEIGH WITH BICTON PARISH COUNCIL

September ended with flash floods and high winds. Our village had debris strewn far and wide. Sandbags were and still are available from the store by the Community Shop. Contact Councillor John Tresidder on 07999 837686 for supplies. Drains were overwhelmed briefly by the volume of water, but quickly cleared. The Clerk alerted the Highways Department to road conditions, especially the silt that poured down again from Tidwell Lane, and also asked County Councillor Christine Channon to approach Highways again about a permanent resolution in this area.

Please try to think ahead when you know the weather is going to be poor. Early preparation can save a lot of work and heartache. There is advice on the Parish Council website: www.eastbudleigh.org.uk under the heading “Emergency Plan”, and also see the notice from the Environment Agency on page 9 of this issue.

Trees along the far side of the Recreation Ground have been thoroughly pruned and the whole area looks much tidier. Solutions are being sought to fill the large pothole by the entrance drive.

Judith Venning:

clerk@eastbudleigh-pc.gov.uk 01395 489155.

The Clerk can be contacted Monday to Friday mornings after 9.30 am.



When you need advice we have the solution

Call our Budleigh Salterton office
01395 44 55 91
51 High Street, Budleigh Salterton B29 6UG

Other offices at:

Sidmouth	01395 51 24 43
Olney St Mary	01404 81 22 28
Exeter	01392 42 42 42
Crediton	01363 77 55 66
Okehampton	01837 51 21 00

Visit gilbertstephens.co.uk
for more information

© Gilbert Stephens 2014. All rights reserved. No part of this publication may be reproduced without the prior written permission of Gilbert Stephens.



- Experienced, friendly and local RIBA chartered architectural practice based in Tiverton, with a central Exeter meeting space.
- Specialising in the adaptation of listed buildings, residential extensions, renovations and low energy design new builds.
- For a FREE consultation please contact Luke McAdam:

01392 459777 – MAIL@HMAD.CO.UK
WWW.HMAD.CO.UK



Our Christmas Trees Heritage

Returns to Salem Chapel, EX9 7EF at
The East Budleigh Heritage Centre,
Saturday/Sunday 2/3 December
10am-3pm



Arranged by the Heritage Centre Steering Group
Contact Maria on 0777 321 8582



CLEAN & EFFICIENT SERVICE

For All Your Chimney Needs

brush & vacuum sweep
bird guards/cowls
chimney pots
repairs & maintenance

Steven Cornish
tel 01395 268046
mob 07970 892085



From The Environment Agency - Rapid Response Catchment Flooding

Flooding is the most common and widespread natural hazard in the UK. One type of flooding that can occur is flooding from river levels or surface water rising very quickly in response to very heavy rainfall. These types of events are rare but can be very dangerous. Examples of flash floods include Lynton and Lynmouth in 1952, Boscastle in 2004 and Coverack in 2017. This type of flooding is termed flash flooding. Across England the Environment Agency have identified 384 'Rapid Response Catchments', with over 75,000 properties being identified as being vulnerable to this risk. Flash floods occur extremely quickly - much faster than other forms of flooding - and with massive force. They can move rocks, tear out trees, sweep away vehicles and destroy buildings and bridges. They tend to happen when heavy rainfall runs off land and quickly swells rivers and streams. Water can also build up quickly in urban areas when rainfall is unable to drain away.

Across Devon and Cornwall there are a large number of communities where this type of flooding could happen. Most major flash floods occur in places where there have been none in living memory, so it is vital that, even if flooding hasn't happened in your community for a long time, you know what to do and how to stay safe.

How to recognise a flash flood:

- heavy rainfall
- a short time between the rainfall and flooding
- large amounts of fast flowing water
- damage to buildings and structures
- dangers presented by debris
- there is an urgent threat to life.

Flash flooding can happen suddenly. You may have to act before the Environment Agency can issue a warning, or before emergency services can reach you.

People particularly at risk are those:

- In basements or single-storey properties
- In a mobile home, tent, caravan, boat or wooden structure
- Unfamiliar with the area e.g. tourists.

What can you do now?

- Sign up for flood warnings - GOV.UK (www.gov.uk)
- Register to the Met Office's Severe Weather Warning Service:
Weather warnings guide - Met Office
- Check the Environment Agency's 5-day Flood Forecast:
Check for flooding in England - GOV.UK (check-for-flooding.service.gov.uk)
- Check to see if your insurance covers flooding
- Know how to turn off gas, electricity and water supplies.

What can you do when you get a Flood Alert or you think Flash Flooding is likely?

- Check that your family, neighbours and pets are okay.
- Move important things upstairs or to higher shelves.

Three steps to safety

Prepare

Be aware and know the signs. Signs to watch for:

- Heavy rain or severe weather reports.
- Rising water levels with churning dark water.
- A build up of debris in rivers or streams.

Act

- Do not walk or drive through flood water.
- If you are in a building with at least two storeys and you believe it is safer to stay where you are, you should move to a higher storey.
- Call 999 if there's a risk to life, or if you are trapped.

Survive

- Call 999 if you're in immediate danger.
- Follow advice if you're in immediate danger.
- Keep yourself and your family safe.

If you would like more information about Flash Flood Risk in your area, or your community is interested in putting together a Community Flood Plan,

please contact dc.flood@environment-agency.gov.uk.

Our Churchyards...

A Shift to Autumn

As summer transitions to autumn, nature puts on a spectacular display of vibrant colours. One of the most enchanting aspects of this season is the turning of tree leaves from lush greens to a brilliant array of reds, oranges, yellows, and browns. But how do trees change colour in autumn?

From green to gold



During spring and summer, leaves are green because of a green pigment called chlorophyll. Chlorophyll plays a crucial role in photosynthesis, the process by which trees convert sunlight into energy. As autumn approaches, daylight hours shorten and temperatures drop. This triggers a chemical response in trees, leading to a breakdown of chlorophyll. As the green pigment diminishes, other pigments, (that are present but masked by chlorophyll), become visible.

Hidden colours

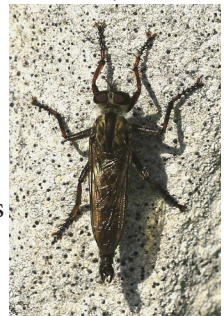
Carotenoids are pigments that are always present. Once revealed they are responsible for the warm yellow and orange hues we see in many autumn leaves. Some leaves turn red and purple, and this is thanks to a different pigment called anthocyanin. It's like magic ink that appears when environmental conditions such as temperature and light are just right.

Each type of tree has its own colour palette. Maples are famous for bright reds, while oaks for browns. It's the diversity of tree species that creates the autumn tapestry. This display changes from year to year because the changing weather conditions play a significant role in determining the vividness of autumn foliage. Dry, sunny days and cool nights produce the most vibrant colours.

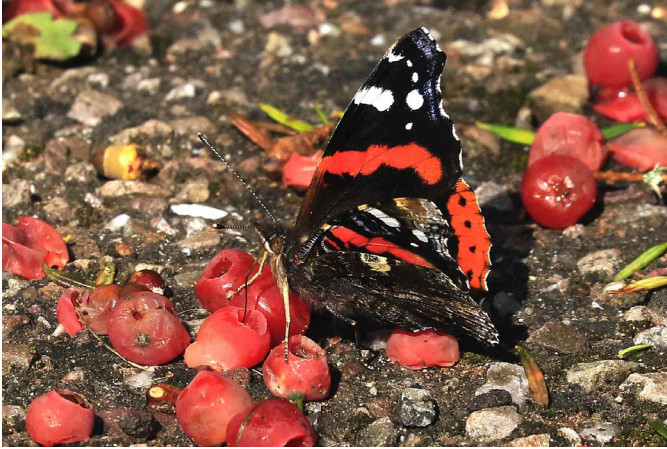
The changing of leaves in autumn is a complex natural process driven by biological and environmental factors. It reminds us of how intricate nature is and the amazing things we can see.

Wildlife

David White reported seeing his first robber fly in the Churchyard and, a few days later, a male southern hawker was flying around, probably hunting insects.



Our Churchyards...



David also spotted at least 16 Red Admirals feeding on yew berries lying on the ground - they seem to be attracted by the liquid in the centre of a berry. David's photos are brilliant and show how fantastic nature is! (More photos from David White are on the next page.)

Churchyard Working Party

Our thanks go to Derek Williams who led the Churchyard Working party on Friday 18th August as we were away.

The Churchyard Working Party dates for the remainder of 2023 are Friday: 20 October, 17 November and 15 December. All are welcome so come and join us and we will find a task to suit you - we supply tools. We start around 10.00 and finish between 12.00 and 13.00 with a coffee break at 11.00 ... biscuits and/or cake as well!

If Fridays don't work for you but you would like to help, please let us know and we can find you a suitable task or two.

Do visit and enjoy the Churchyards – wonderfully welcoming, peaceful places for quiet contemplation and mindfulness, and a haven for wildlife ... and photography.

Penny and Paul Kurowski. Tel: 01395 742942; churchyard.as@rmcommunity.co.uk.



Sharon

Local Mobile Hairdresser

If you would like to have your hair done in the comfort of your own home

please contact me on

01395 265973

Touch Of Gloss

Painting and Decorating
Over 20 years experience
Jill Simpson

Call: **07932 684241**

E: jillsimpson10@gmail.com



G B Building & Maintenance

Conservation Builders
Historic, Listed and
Traditional Methods

Lime Plastering

Stonework

Cob Walls

Lime Wash Paints

Brickwork



Telephone:

Mr Gary Broom on

07776 032289 or

01823 283212

Listed Heritage Member

Aerial Services (Mike Cummings)

- Same Day Service Available
- 7 Days a Week
- Repairs & Reception Problems
- Digital Aerial Upgrades
- CCTV Systems
- Wi-Fi Hotspots

01392 279513 | 07836 641635

www.aerial-services-mikecummings.co.uk/cctv

**NO CALL OUT CHARGE -
FREE ESTIMATES**





Wildlife Photographs by David White

Clockwise from top left:

- Nightjar with two chicks almost ready to fledge
- Heron swallowing an eel
- Six Spot Burnet moth feeding
- Turnstone - a scarce bird in our area
- Moorhen feeding its chick
- Little egret and great white egret





BURSTON & SON
Chimney Services

- Chimney Sweep
- Cowls fitted
- Nest Removal (seasonal)
- CCTV equipped
- Fully insured



Call 07973 662621/01395 278228

www.burstonandsonchimneyservices.co.uk

East Budleigh Garage

Justin Hill

- Free Fit Tyres
- Full Workshop Facilities
- MOT • Servicing • Exhausts
- Diagnostic Tune • Body Repairs
- Batteries • Valeting • Air Conditioning



Your personal and professional local garage

Lower Budleigh, East Budleigh, Devon EX9 7DL

Tel: (01395) 445595 Fax: (01395) 445531 email: enquiries@eastbudleighgarage.com

East Budleigh Community Shop

Newsletter No. 156 – October 2023

SHOP FINANCES AND PRICING

Over recent years there has been substantial inflationary pressure on UK businesses. The pandemic, the war in Ukraine and Brexit have all contributed to the problem. There have been big increases in the cost of raw materials, particularly agricultural products, energy costs are at very high levels, the cost of employing staff has shot up and high interest rates are placing a heavy burden on many businesses. The result is that consumers are having to pay much more for goods and services. This price inflation has been particularly acute in the grocery sector.

The shop is not immune to these pressures and more often than not when we need to replenish our shelves the new stock is costing us more than the stock it replaces. On top of this we have seen a big increase in our operating costs. Our energy bills have increased from £400 per month to £1200 per month after our fixed price contract finished. We have had to increase the amount we pay our staff to ensure that they remain above the new minimum wage threshold.

Mel and the management team have done a great job to try and ensure we continue to offer value for money to our customers. They have worked incredibly hard to balance these increases and to shoulder as much of the burden as they can from our customers. They have tried to manage price increases to minimise the impact on essentials. They have sought out alternative stock lines and changed suppliers to offset price increases but the reality is we have seen our gross margin shrink at a time when our fixed cost are substantially higher. So, a big thank you to them for all that they do (often unpaid).

As an example of how quickly prices are rising, we have always stocked many price marked products in the shop – Ambrosia custard has been price marked at £1.49 for some time. When we bought replacement stock the new can was price marked at £ 1.95 – and with a reduced profit margin to us as well! We are also seeing more “shrinkflation” where pack sizes are being reduced but to give the impression that prices haven’t increased. These things are, I am afraid, out of our control and being seen across our sector.

The result of this is we need to not only pass on the price increases in full but we need to add a little bit more to meet the increase in our fixed overheads. We are a not for profit organisation so under less pressure than many other businesses but we cannot afford to lose money as to do so for a sustained period of time would jeopardise the future of the business. At a recent meeting of community shops, Mel found out that we already operate at a substantially lower gross margin than most other similar businesses. There is a real concern that increasing prices will result in lower sales which would exacerbate the problem. Conversely, an increase in sales would result in a greater contribution to our overheads and enable us to mitigate price rises. Whilst I understand that many households are experiencing genuine financial pressure it would really help the shop if we could attract some new customers and persuade our existing customers to buy one or two extra items each week.

Finally a word from our shop manager, Mel: We are continuing to provide the best service that we can to our village and to our loyal customers. We thank you all for every single purchase you make. We are continuing with our loyalty card scheme which gives you back £8 when you spend £80 (a stamp for every £10 you spend) and we will continue to keep those price rises as low as we can, whilst ensuring that the shop continues to be here for us all to enjoy!

Paul Smith, Chair of Management Committee

Discover your *local...*

Providers of tailor-made care
in the comfort of your home

- Tailor-made care, to meet client needs and wishes
- Visits range from 1 hour to 24 hours, with Live-In Care options available
- Highly trained Care Professionals



Proud to be a leading
Employer in Care

- Excellent Rates of Pay
- Award Winning Training
- Career options in Care and Management
- Range of local contracts to suit you

Call us on
01395 200600

 **Home Instead.**

homeinstead.co.uk/exeter-east-devon



The Former Little Otters are holding a fundraising Jumble Sale at the East Budleigh Village Hall on 4th November starting at 10.00.

This time we are raising funds for the MND Association.

Do come along and support if you can and if you have jumble to donate please phone Fran on 07880 331465.

Refreshments will be available & entry will be £1.00. Look forward to seeing you there.

East Budleigh with Bicton Relief in Need Trust

The East Budleigh with Bicton Relief in Need Trust has funding available to support residents of the Parish in need of financial support.

In the past, we have helped individuals with technology requirements, hardship caused by the cost of travel and other needs which would support education.

The funding could also be used for hardship cases in the community. However, the individual must be a resident or work in the Parish of East Budleigh with Bicton.

The trustees meet twice a year in March and October however requests for funds can be made at any time, and every request is discussed and agreed/declined by our committee of trustees. Every application is treated confidentially.

If you would like more information, please contact the secretary of the charity, Fran Mills raleighmc@gmail.com Tel 01395 568

East Budleigh Church Hall

Available to hire for functions and activities.

Please contact:

Richard Slade 01395 443609 or church office 01395 443397



SIR WALTER RALEIGH

COMMUNITY OWNED PUBLIC HOUSE, RESTAURANT & CAFÉ



Check our website or Facebook page for latest events and menus

www.sirwalterraleigh.co.uk | 01395 442510 | East Budleigh, Devon EX9 7ED

SWR Community Pub Limited - AGM

The Annual General Meeting of the SWR Community Pub Limited was held on Sunday 24 September at 4pm in the Village Hall. The Committee Report, Agenda, draft Profit and Loss, and draft balance sheet had been circulated in advance, along with nominations for the committee. There were new vacancies for Company Secretary, a Volunteer Representative and for either Chairman or Treasurer. The meeting was attended by over 100 shareholders.

The Chairman Mark Duffelen thanked the many volunteers and staff for creating the thriving community pub we have today. He provided an overview on behalf of the Management Committee highlighting the successes of the pub from outstanding volunteer engagement, higher than expected customer numbers and very significant refurbishments of the premises and kitchen as well as the considerable challenges of management efficiencies, new payment systems and staff turnover and costs. The Treasurer (acting) reported 15-month revenue 1 January 2022 to 31 March 2023 of £329,000 against costs of £334,000 resulting in a loss of £5,000. Significant progress has been made to control staffing costs and margins in the first half 2023 which indicates an improving trend for the current year. The value of assets, building and fixtures/fittings stands at £400,000 compared to £300,000 on purchase. Draft accounts were presented and another formal meeting will be called shortly once the accounts are finalised to sign off the accounts. The meeting voted to appoint auditors Cadwallader and Co Ltd.

In due order, the Management Committee stood down, and willing to stand again were duly re-elected. Mark Rice agreed to take the role of Chair, plus the roles of Clerk, Volunteer Representative, Customer Liaison and Management Efficiencies were filled. The Front of House Manager reported on her dedication and experience to-date which was followed by a Q&A session with the Head Chef and Management Committee. Welcomed feedback included menu choices, volunteer training and accounts filing. There was a call for more volunteers to ensure the continued success of the pub and Walt's café. It was reported that bookings for the flat (Raleigh's Rest) are going well and there was a call to all who attended to spread the word.

Community Suppers at the Sir Walter Raleigh at 6.30 pm £15
Monday 23 October and Monday 27 November
BOOK EARLY! 01395 442510

WALT'S CAFE
Monday, Tuesday and Friday 10am-12noon
Coffee, Tea, Home-Made Cakes, Bacon Sandwiches

Drake's C of E Primary School & Foundation Stage Unit

Growing Stronger Together

Parent and Toddler Group

Opening
September

Thursday mornings
9.30-11.00am

No charge and everyone is welcome



01395 443871

admindrakes@thelink.academy



Drake's C of E Primary School & Foundation Stage Unit

Growing Stronger Together

Open Wednesday - Friday term time only

Opening
September

Children from 3 years

Funding accepted

Call or email to arrange a tour



01395 443871

admindrakes@thelink.academy



Bacon Baps, Cakes, Toy Stall, Tombola, Amazing Selection of Craft Stalls

Drake's School Winter Craft Fair

18th Nov 2023
Saturday
10am-2pm
Public Hall
Budleigh Salterton

Entry Free
charity number 1093173



We have had a fabulous start to the new school year. We have opened a new Pre School and are looking forward to welcoming more children. We also have a Parent and Toddler Group every Thursday morning, 9.30-11.00am. We are continuing to provide fabulous experiences and have already visited the Eden Project to inspire the children's learning across the curriculum.

Years 5 and 6 will get the chance to do some sea swimming and to learn some vital skills in the sea. Bikeability is taking place in KS2 and all KS2 children have taken part in the Link Academy Trust Cross Country Event.



We are lucky enough to have 'A Chance to Shine' running cricket sessions with all age groups. They are looking forward to developing their skills.

We have a busy half term coming up with many exciting things happening and look forward to sharing our experiences with you.

"Well done to all the staff and children on such a great Ofsted report. We are all very proud of the fabulous school we have in our village." Please click on the link Find an Ofsted inspection report or click on the school website link below, to read it.

Please visit our school website www.drakes.thelink.academy and follow us on Facebook to keep up to date with all the exciting things happening in school.



Search for - Drake's CofE Primary School

DRAKE'S PTFA

With the children returning back to school, the PTFA have kicked into action again. We started the year off with our big quiz which raised a fantastic amount of money, so thank you to all who attended and helped us towards our target of new playground equipment for the school. So far, we have had contributions agreed from Budleigh Salterton Lions, The Lord Clinton Charitable Trust, The Norman Family Charitable Trust and hopefully more to come.

Our next event is the Christmas craft fair on Saturday 18th November at Budleigh Salterton Town Hall. We have some great stalls already confirmed, but if you would like a table for £15 get in touch with Heather on 07957906030 or drakesptfaeb@gmail.com.

EAST BUDLEIGH HISTORY SOCIETY

The East Budleigh History Society met on Monday 18 September at 1.30pm at the Sir Walter Raleigh.

The meeting reflected on the success of the first season at the new East Budleigh Heritage Centre. The displays for Our Famous Heritage on Sir Walter Raleigh, Roger Conant and Salem Chapel had been produced to a high standard with oversight from our professional curator and will hopefully remain as permanent exhibitions upstairs at gallery level. Our thanks to Kathy and Maria (Raleigh), Marj (Salem), Ian (Conant), and to Stephen and Alex.

Following a very kind donation, thank you Mary, we were able to start a lace exhibition which is certainly destined to grow. Salem Chapel itself was the main focus of Our Heritage Open Day in September.

The meeting wholeheartedly supported a proposal for a Remembrance Day event on Saturday 11 November at the Heritage Centre. The History Society is inviting people in the village to also remember their own family members by telling their stories. If you have a family story to tell, maybe a father/mother or grandfather/mother's war experience, perhaps photos/medals, and would like to contribute to the Remembrance event, please do come along to our next meeting on Monday 9th October at 1.30pm in the SWR pub and we can help you to display your Remembrance.

Remembrance events:

- Thursday/Friday 9/10 November 1-3pm
- Saturday 11 November 10am - 3pm

Progress is also being made on establishing a website, more to follow.



NELIGAN
FINANCIAL

Financial planning that helps
and live your **ideal retirement**
your life **without money worries**

andrew@neliganfinancial.co.uk 01392 539 429 9 Middle Street

Neligan Financial Limited is an appointed representative of Best Practice IFA Group

East Budleigh in Bloom



The summer displays have all faded, soon to be replaced with our winter planting at the end of October.

The geraniums have flowered really well, giving us plenty of summer colour. Some of the baskets have not done so well; after a good start they faded quite quickly.

We have our AGM on 18 November at 3pm and we hope you will all come and enjoy an afternoon tea with us. It is a chance for us to thank all our helpers and waterers.

The herb garden has had a tidy up ready for winter. We will put in some new herbs in the spring. In the meantime, happy gardening!

If you have any queries please contact the secretary,
Jon Roseway, 01395 488739.

s you plan for
ent lifestyle for the rest of
orries.



et, East Budleigh, Devon, EX9 7DQ

<https://neliganfinancial.co.uk/>

p Limited which is authorised and regulated by the Financial Conduct Authority.

Image by Ian Creffrey Art

RSPB Update on the Heaths

July truly was ‘the month of the mire’ on Aylesbeare Common. Above average rainfall throughout the month gave the bogs and mires a well-needed top up, bringing with it a splendid display of bog pimpernel (*Anagallis tenella*), bog asphodel (*Narthecium ossifragum*) and the carnivorous round-leaved sundew (*Drosera rotundifolia*). July also brought about the peak survey period for the southern damselfly (*Coenagrion mercuriale*), one of our priority species at RSPB Aylesbeare. Initial results indicate similar numbers to last year, with the breeding period having been shifted slightly earlier in 2023, potentially as a result of the hot and dry weather in June.

The nightjar (*Caprimulgus europaeus*) population on Aylesbeare and Harpford Common were also in full song by July, with a chorus of churring heard on the heath most nights. Nightjars are described as a crepuscular species, meaning they are most active at dusk and dawn, and hearing their unique eerie song on a still midsummer night is an experience that cannot be recommended enough. Surveying of the populations on all the commons took place throughout the month, and the data collected allows us to better understand the behaviour, territories and overall numbers of nightjars, on the sites we manage and also looking at the collected data across the Pebblebed Heaths. In mid-August UK nightjars embark on their migratory mission back to Sub Saharan Africa, many of whom will end up on the scrub grasslands of the Congo basin.

After the May 9th flood event, repairs were still required in the Five Ponds area of Aylesbeare Common. A digger was brought in to help repair the track down to Five Ponds to improve fire engine access (and allow Vlad to transport pond dippers in the tractor and trailer during heath week!), as well as rebuilding the overflow channel between pond four and five. Leaky dams were constructed within the channel, with the help of our volunteers to secure pebbles and earth, helping to prevent future scouring and increase resistance. This work has allowed us to lower the water level of pond four and build more resilience into the hydrology of Five Ponds, helping to slow the flow of water during flash flood events.

Heath week 2023 was enjoyed by many despite inclement weather for much of the week, with highlights including our pond dipping/tractor ride sessions, our ‘Things with Wings’ event on the butterfly ride, and an evening of Moths, Bats and Nightjars. Our special thanks go to Merry Anderson, for kicking off the event with a talk on bat ecology and the intricacies of what she does as a consultant bat worker. Despite Devon giving residence to 16 of the UK’s 17 breeding bat species, it turned out to be a fairly quiet night for the bats as well as the nightjars – wildlife doesn’t always perform on cue. But there were plenty of moths to be seen in the traps, giving us a glimpse into the inner workings of the night-time ecology of the heathland and surrounding woodlands. August brought with it some finer weather, diverting the Aylesbeare team’s attention towards our recently acquired hay meadows. Our Ryetec flail collector (whose purchase was made possible by funding from the FiPL scheme thanks to the East Devon AONB last summer) was used to collect green hay from two nearby species-rich donor sites, which was then spread by hand back on our meadows to encourage greater plant species richness over time. 97% of wildflower meadows in England and Wales have been lost in the last century, and it is imperative to prevent further loss whilst also restoring new species-rich hay meadow sites to aid in halting the UK’s current biodiversity crisis. Looking forward, a potential weather window for more hay cutting has presented itself, although the forecast continues to shapeshift daily (the situation is being monitored closely). And finally, as ever in August, the battle against the march of the bracken continued.

East Budleigh Village Hall

OPEN MORNING

Saturday, 7th October from 10:00am to 12 noon

Following on from the success of the play park improvements and the refurbishment of the hall, including the facelift to its exterior, the Trustees of the Village Hall would like to invite the East Budleigh community to an open morning to present their ideas for further improvements. Residents will be invited to meet the Trustees and the New Hall Manager to discuss and comment on the plans, as well as enjoy some refreshment. We hope to see you there!

From the team at Launchpad.

Launchpad would like to thank the East Budleigh community for their generous donations to the food larder at Wesley's in Budleigh Salterton to support families and individuals in need. Your community shop volunteers regularly deliver donations with smiles on their faces. Thank you!

Launchpad is a social enterprise, training adults with learning disabilities in catering and hospitality, based at Seachange, at the heart of the local community. We also run our cafe 'Wesley's' from the Temple methodist church hall, where we also provide a community fridge / larder in order to fulfill our aim to reduce food waste and support the local community.

STADDONS

CAR & VAN RENTAL

Modern fleet of cars & vans including 7 seaters


Open 7 days a week

Rent a car for a day, week or more

Fully comprehensive insurance

Pick up
and drop off
available

Staddons: 6-10 High St, Budleigh Salterton, EX9 6LQ

 Rental Hotline: 01395 272 345

Drivers must be 25 & over driving licence, credit card and ID required



www.staddons.co.uk

The Old Vicarage

Otterton

Is it time for you to have the care, comfort and companionship you deserve?



*A Warm
Welcome Awaits You*

The Old Vicarage in Otterton is a residential care home in a beautiful country setting where every effort is made to create the ideal environment for you to enjoy your retirement years.

Whether you are looking for a comfortable home for long term living, a relaxing holiday or a taster break to get to know us, our team are here to help.

You can look forward to:

-  **Beautiful and homely accommodation**
-  **Outstanding care**
-  **Award winning cuisine**
-  **Full and varied activities programme**



Call us today 01395 568208

Outstanding in care



Visit our website: www.theoldvicarageotterton.com

Email: enquiries@theoldvicarageotterton.com



The Old Vicarage, Ropers Lane, Otterton, Devon EX9 7JF

BoeBoe

Property Services Ltd

- Property Maintenance
- Domestic and Commercial
- Kitchen Fitting
- Bathrooms
- Flooring
- Project Management
- Fencing & Decking
- Landscaping
- Contract Maintenance
- Snagging

Email: info@boeboe.co.uk



Find us on:
facebook.



Tel: 07934 977929

AMR

**Window and Solar Panel
Cleaners covering East
Budleigh and surrounds**

- Windows and frames cleaned every time.
- All work guaranteed to your complete satisfaction.
- Fully insured and DBS (CRB) checked.
- Friendly, professional service.
- Established 2002.

Telephone 07739 743 409 to arrange your FREE quotation.

Please visit our website for more information www.amrs.co.uk or email hello@amrs.co.uk

Let your panes be our pleasure.....



Garden Machinery.

Sales.
Service.
Repairs.



Garden Kit

For service, advice and an excellent price, visit us or call us now!

Your local Garden Machinery dealer.

www.gardenkit.co.uk

01395 567514

Unit 2, The Old Sawmills, Hawkerland Road
Colston Raleigh, EX10 0HP

EAST BUDLEIGH HERITAGE CENTRE IN SALEM CHAPEL

It is still hard to believe we did it! Starting with the invitation on 16 June from the Historic Chapels Trust to try out our community ideas, setting up East Budleigh Heritage Centre Ltd, signing the Licence Agreement, the Big Clean, conceiving the four diverse exhibitions proclaimed in these pages at the end of end June, we then had to deliver!

Over the 4 weekends in August we welcomed almost 400 visitors to the new East Budleigh Heritage Centre in Salem Chapel. The events were promoted on the East Budleigh Village Events and Otterton WhatsApp groups, Budleigh Salterton Tourist Information and Visit Devon websites and by interview, on air with East Devon Radio!

Our Famous Heritage exhibition celebrated the rich village history with Sir Walter Raleigh, Roger Conant and Salem Chapel itself, featuring exhibitions researched, written and produced by six members of the steering group including our dedicated professional curator. These displays remained throughout August and now form a hopefully permanent exhibition in the upstairs galleries.

Community focused, we make no apologies for the promotion of our Sir Walter Raleigh pub alongside the SWR exhibition! We are grateful for those who bought tickets for our Preview Gala Luncheon and Dinner which financed the cost of one exhibition and to the Roger Conant Group who funded their exhibition.

Our Natural Heritage Exhibition featured the captivating wildlife photos by David White; his four talks were a very significant draw, and we were all fascinated by the Exeter Beekeepers' display. John Washington's artistic Heritage Trail transported us to a different time, and his wildlife paintings to a different place. We are grateful to Clinton Devon Estates for the loan of the Pebblebed Heaths and Lower Otter Estuary displays for Our Jurassic Heritage exhibition in the School Room, and to the Otter Valley Association (OVA) for their informative displays.

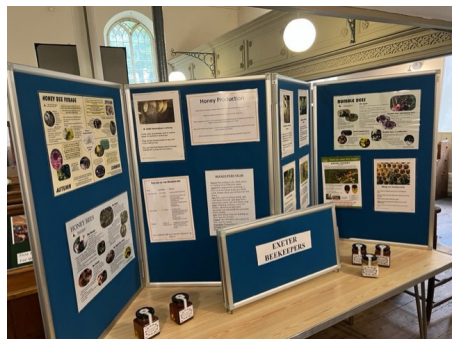
With Our Foodie Heritage 3-day Bank Holiday event we celebrated local producers of preserves, teas, wine, beers, ciders and chocolate to name but a few, and given the dedicated licence, were able to enjoy a glass too! Our grateful thanks to the East Budleigh Community Shop for sourcing our goodies and to Otterton Mill for the scones and cream teas devoured with relish!

We hope you all enjoyed these new opportunities to make connections with our heritage. Given the success of our first sessions, the steering group unanimously agreed to open again in September with Our Heritage Open Day in support of the national Heritage Day events. Our huge thanks to all who worked to make these exhibitions happen. We unashamedly modeled ourselves on the National Trust, and are very pleased with the outcome. It demonstrates that there is the potential for a bright future for the East Budleigh Heritage Centre in Salem Chapel.

We look forward to our next events:

- Our Remembrance Heritage November: Thursday/Friday 9/10th 1-3pm, Saturday 11th 10am-3pm
- Our Christmas Trees Heritage when Salem Chapel welcomes back its traditional Christmas Trees extravaganza! Saturday/Sunday 2/3 December 10am-3pm

To note: we understand that discussions on the long term ownership of the Salem Chapel will now be proceeding following the completion of the structural survey on 29 August.



Your old foreign currency can make a world of difference.



Help A 'Gift for Living' with unwanted coins and notes.

Have you returned from holiday with unwanted currency, or have old foreign coins and notes hidden away in the back of a drawer? If you have coins and notes you could afford to donate - even defunct pre-euro currencies such as old Spanish pesetas or Greek drachma - we can turn them into financial support 'A Gift for Living'; a Lions initiative working successfully in the countries of the Balkans for the last 25 years following the recent violent conflicts.

We can accept any currency, including UK coinage and notes.

Please drop yours off at Seachange and other locations around Budleigh.



www.budleighions.com

Budleigh Salterton Lions Club (CIO) Registered Charity No.1198874
Lions Clubs International A Gift For Living Charity Reg No.1070418



Budleigh Salterton Lions Club



The Budleigh Lions Club are collecting old unwanted foreign and UK coins and notes. All proceeds will go to Lions Clubs International Charity 'A Gift for Living' (Charity Reg No 1070418).

You can drop the coins and notes off at the Budleigh Lions Bingo evenings on Wednesday 1st November or 6th December at the Public Hall from 6pm or at the Seachange reception.

We are also collecting used postage stamps for Children's Hospice South West and hearing aid batteries. Button batteries contain a small amount of silver. A member of Southend Lions Club has the ability to extract this and dispose of the rest, environmentally safely. One kilogram of batteries will yield £50 of silver at today's prices. Please collect these from care homes, medical outlets, chemists, hearing aid providers or anywhere that will save them for you. All monies generated from the hearing aid batteries will go into the Lions' Vision Screening Programme.

Thank you for your generosity and your continued support, it is very much appreciated. If you would like to get involved and make a difference you can contact Budleigh Lions Club at budleighlions.com. Membership of the Lions is open to men and women of all ages.

Richard Allen, President, Budleigh Salterton Lions Club (CIO)



East Budleigh Craft Group

Christmas Craft Fair

Saturday 18th November 2023

10am – 2.30pm

East Budleigh Village Hall

An ideal time to buy Christmas presents, or treat yourself to something. Paintings & cards by a local artist, wood crafts, soft toys, knitted accessories, Christmas cards, jewellery, Christmas accessories and gifts.

Raffle tickets for sale.

Refreshments served 10am – 2pm, tea/coffee and cake/biscuits
£1.00 per person.

Entry – FREE of CHARGE

For further information contact Sue 07840 739425





Civil and Structural Calculations, Drawing and Advice for a wide range of projects, small or large.

- **Domestic** – Structural Alterations, Extensions, Loft Conversions, Retaining Walls, New Builds Etc
- **Commercial** – Steel, Concrete, Masonry and Timber Buildings, Bespoke Fabrication Design and Drafting
- **Land and Water Engineering** – Above and Below Ground Engineering Design, In-River Engineering Design

John Edmonds BEng IEng MICE

www.forge-cse.co.uk

E: john@forge-cse.co.uk

T: 07782378988



OVA Walks Programme for October 2023

Please check the OVA website (www.ova.org.uk) on the day of the walk, in case of last-minute changes. Make bookings (where requested) with the walk leaders.

Friday 6 October – 4.00pm – 4.5 miles. 2.3 hours

'Ghost Train'

Meet: Tipton St John old Level Crossing (OS 115, SY 091 917) a roadside bench between the Golden Lion Inn and the Playng Fields memorial clock. Car parking in the playing fields car park (donation) or at the pub if staying on for the meal.

An illustrated (old photos) walk to mark the 60th anniversary of the demise of steam trains in the Otter Valley. Across the fields to look at the 5-arch bridge and Tipton Mill, then footpath, road and track following the Sidmouth branch route as far as the Knapps Lane bridge, Harpford. Across the Otter to look at the site of Newton Poppleford station and the camping coaches siding, then follow the Budleigh branch route back along the river to Tipton St John Junction.

Finishing by 6.30pm by 'whetting your whistle' at the pub with another look at the photos or stay on for an evening meal together – book your own place(s) by ringing the Golden Lion 01404 812881 (ask to join Haylor)

Walk Leader: Haylor Lass 01395 568786

Wednesday 18 October – 10.00am – 5.5 miles. 3 hours

'Otter and Orchards'

Meet: Newton Poppleford Recreation Ground CP, Back Lane, Newton Poppleford (OS 115, SY 088 899) (What3Words wisely.amazed.configure)

A walk northwards from Newton Poppleford taking in hamlets west of the Otter as far as Fluxton, as well as the river bank. An easy to moderate walk, although a short section can be very wet underfoot (or even flooded) after heavy rain. There will be a coffee stop part way round (so bring a flask).

Walk Leader: Ross Hussey rdandamhussey@hotmail.com or 01395 227991

Mobile for contact on the day only 07902 255915

Saturday 21 October – 10.00am 6.5 miles. About 2.5 hours.

'Classic coastal path and Otter exploration'

Meet: new car park, South Farm Road (£ applies) EX9 7AZ

This walk combines stunning views along the coast, a stroll through a delightful village and a chance to appreciate the restoration of the lower Otter Valley.

Walk Leader: Steve Hagger 01395 442631 / 07901 517948

Wednesday 1 November – 10.00am - 4.6 miles. 2.5 hours

'Here's one for Eeyore'

Meet: Donkey Sanctuary car park.

One strenuous and one moderate climb (1,013ft of ascent). Lots of gates; 2 stiles. Starting from the Donkey Sanctuary car park, we head for Weston and down into Weston Combe. From there a stiff climb brings us to Dunscombe Cliff, where we will stop for coffee. Following the coast path, we head down to Salcombe Mouth and then a steady climb up to Salcombe Regis, where we can stop for a restful few moments in Salcombe's tranquil churchyard. Then it is back to the Donkey Sanctuary where those that wish can avail themselves of the café for a bite of lunch.

Walk Leaders: David and Rosie Conner. 07831 406959

Friday 3 November – 10.00am – 5.8 miles. 3 hours.

'Around the Commons'

Meet: Wheathill car park (OS 115, SY 041 847)

We will head out from Wheathill and go to Dalditch, Squabmoor Reservoir and Bystock Ponds with a stop for coffee.

Walk Leader: Sarah Westacott 0770 6078143

ESTUARY VIEW

The Window Company



CALL US
for a
FREE QUOTE
TODAY

YOUR TIMBER, ALUMINIUM AND UPVC SPECIALISTS

DISCOVER A BETTER
WAY OF BUYING
WINDOWS & DOORS

At Estuary View, we believe in transforming homes, not just selling windows and doors. Our team is devoted to delivering a 5-star service, offering bespoke, high-quality products and an honest, customer-centred approach that is distinctly our own.



HONEST APPROACH



No sales calls, just trusted advice from our skilled team



EXTENSIVE RANGE



Make your home as unique as you are.



SEAMLESS PROCESS



Exceptional service at every step.

01392 715 721

www.estuaryview.co.uk



Trusted Home Care & Support
Helping Hands Care

*Expert, compassionate
care in the comfort of
your own home.*



01395 264767
helpinghands-care.co.uk



OTTER VALLEY
FUNERALS

*Budleigh Salterton's
only independent Funeral Director*

*Pre Paid Funeral Plans
from £1595*

Call us
01395 911118
www.ottervalleyfunerals.co.uk

Otter Valley Funerals
1 Brook House, Brook Rd
Budleigh Salterton
DT20 9DY



Our Remembrance Heritage

at East Budleigh Heritage Centre in
Salem Chapel, EX9 7EF

Thursday/Friday 9/10 November 1-3pm
Saturday 11 November 10am-3pm

Lest we forget



Arranged by the Heritage
Centre Steering Group
Contact Maria on 0777 321 8582



**WHATEVER YOUR LEGAL NEEDS,
WE CAN HELP!**

Our services



**Residential
Property**



**Family
Law**



**Wills, Trust &
Probate**



**Disputes &
Claims**



Business



**Inheritance
Tax**



**Commercial
Property**

Your nearest office

📍 **MAGNOLIA HOUSE**
CHURCH STREET
EXMOUTH
EX8 1HQ



SCAN ME



**BOOK
A FREE
SESSION**



Do you know anyone living with dementia?

Stimulating, engaging and therapeutic sessions for those with dementia and memory loss

Active Minds - East Devon
During the week at SEACHANGE
(previously Budleigh Hub)

Book a free session call Kathrine on 01626 774799 or visit www.atlas.care

 Email@atlas.care
 Find us on Facebook



- Affordable
- Accessible
- Effective

The Ear Wax Clinic

We're All Ears

- Safe and comfortable ear wax removal
- Local registered nurse
- Over 100 five-star reviews
- Same week appointments
- Clinic and home visit options
- Friendly environment



Free on site parking

Your Local Microsuction Specialist

Website www.theearwaxclinic.org
Email info@theearwaxclinic.org
Address Pebble Brook Clinic, Exeter Road
 Newton Poppleford, EX10 0BJ

Call us on: 07395 881 157




Emily RGN

**Painting & Decorating by
Steven Richards**

Free estimates for all
Interior & exterior decoration
also fascia & guttering cleaning

tel 01395 446382

mob 07970 158772

8 Hayes Close

Budleigh Salterton



Exe Mills Carpets

Unit 4 Concorde Road • Dinan Way Trading Estate • Exmouth EX8 4RS

Tel and Fax: 01395 275772

**Carpets/Vinyl/ Rugs
Free Measuring
Expert Fitting Service Available**

Over 30 years experience

Call 01395 275772 and ask for Ian or Dave

FREE COURSES FOR ADULTS



- Learn a new hobby
- Upskill for career progression
- Access higher level learning



Visit bicton.ac.uk/adult
Call 0330 123 4782

*Some courses require material fees.
Funding options available for 19+ further/higher education courses.

HOUSE



SELF STORAGE MADE EASY

WOODBURY

Woodbury Business Park
Exeter EX5 1AY

01395 239400

ROCKBEARE

Houndbeare Business Park
Exeter EX5 2EZ

01404 597560

www.house-it.co.uk



Domestic & Commercial Electrician

Based in East Budleigh

www.otter-electrical.co.uk

Friendly Professional Service
Single Sockets to Rewires
Quality Work & Fair Pricing
All work Certified & Insured
Free Estimates, No VAT

Call Ian: **0779 406 6873**

Email: ian@otter-electrical.co.uk

**Otter Electrical
Services**

ELECSA
Part of the NICE Group

Part P
Approved Contractor

www.elecsa.co.uk

Fine
MEMORIALS



"Your local independent Mason"
RENOWNED FOR QUALITY

TIVERTON

2-4 WESTEXE NORTH,
EX16 5LX

01884 211225

BARNSTAPLE

41a BEAR STREET,
EX32 7DB

01271 444429

EXETER

11 HEAVITREE ROAD,
EX1 2LD

01392 344397

ALSO AT BRIDGWATER & MINEHEAD

WWW.FINEMEMORIALS.CO.UK



WANTED:

Stamp Collections

large or small

I wish to buy all-world stamp collections.

I am particularly interested in British stamps, British Empire & the Commonwealth.

Please ring, or email, to arrange a free, no obligation valuation.

I can visit you at home.

(subject to Covid of course)

Brian Cook 01626 852552
or email

sunderlandcook@btinternet.com

HOME MAINTENANCE

most repairs to the home

Peter Read

07476 882353

Painting internal and external

Damp and Timber treatments

Wall Tie replacements

Fencing-Patios-Decking

Pressure Washing

Any job too big for you to tackle.

**Call us for advice. We are local
and will help if we can.**

peterread11@hotmail.co.uk

Who's who in East Budleigh & Bicton

Vicar - Rev'd Martin Jaques -
01395 443473 / 07795025016

Churchwarden -
John Neligan 01395 442781

RMC Administrator
Fran Mills 01395 568732
raleighmc@gmail.com
The office at St Peters church is open;
Wednesday 10-12
Monday, Tuesday & Thursday please
phone between 9-1

**Parochial Church Council -
Secretary -**
Fran Mills 01395 443397
pccsecretary@rmcommunity.co.uk

Treasurer -
Maria Malinowska 07773 218582
pcc treasurer.as@rmcommunity.co.uk

Bellringers Captain -
Alan Murdoch 01395 445230

Organist -
Geoff Aplin 01395 442951

Church Hall Bookings -
01395 443609 or
Church office 01395 443397

Parish News
ebmag.as@rmcommunity.co.uk

Sir Walter Raleigh
MENU

PUB CLASSICS

STARTERS

ROASTED PUMPKIN SOUP
Parmesan croutons & Smoked paprika nuts
£6.00

HAM HOCK TERRINE
Apple chutney & Mixed leaf salad
£7.50

MACKEREL FLATBREAD
Fennel slaw & Pickled chilli
£6.50

MAINS

FORDMORE BEEF BURGER
Cheddar cheese & Skinny fries
SMALL £12.00 | LARGE £15.00

VEGETABLE BURGER
Smoked cheddar cheese & Skinny fries
£14.00

BEEF SHIN COTTAGE PIE
Creamy mashed potato & Braised red cabbage
£14.00

BEER BATTERED FISH & CHIPS
Mushy peas & Curry mayo
SMALL £11.00 | LARGE £16.00

ALLERGENS & INTOLERANCES

We are happy to provide you with allergen and intolerance information for any of our menu items however, please be aware that due to the nature of our busy kitchen, there is a small risk that traces may be found in any of our dishes.

SPECIALS

STARTERS

VENISON CARPACCIO
Mushrooms a la grecque & Celeriac puree
£8.50

CHARRED GOAT'S CHEESE
Onion seed cracker & Apple chutney
£8.00

PAN-FRIED SCALLOPS
Cumin cauliflower purée & Preserved lemon
£12.50

MAINS

COURGETTE ROGAN JOSH
Bombay potatoes, Onion bhaji & Dukkha
£16.00

FORDMORE SIRLOIN
Potato fondant & Charred leek
£23.00

OVEN BAKED HAKE
Wild mushrooms & Samphire
£19.00

SIDES

SEASONAL VEGETABLES - £4.50
SKINNY FRIES - £4.50
DIRTY FRIES - £6.50
CHUNKY CHIPS - £4.50
ONION RINGS - £4.00
WARM SOUR DOUGH - £5.00



Services in the Raleigh Mission Community - October 2023

Date	Time	St Peter's	All Saints	St Michael's
October				
Sunday 1st	8.00	Holy Communion BCP		
Sunday 1st	9.30		Holy Communion	
Sunday 1st	10.00	Holy Communion		
Sunday 1st	11.00			Morning Prayer
Tuesday 3rd	9.30		Morning Prayer	
Wednesday 4th	9.30	Holy Communion		
Thursday 5th	9.30			Morning Prayer
Sunday 8th	8.00	Holy Communion BCP		
Sunday 8th	9.30		Holy Communion	
Sunday 8th	10.00	Holy Communion		
Sunday 8th	11.00			Holy Communion
Sunday 8th	18.00	Choral Evensong		
Tuesday 10th	9.30		Morning Prayer	
Wednesday 11th	9.30	Holy Communion		
Thursday 12th	9.30			Morning Prayer
Sunday 15th	8.00	Holy Communion BCP		
Sunday 15th	9.30		Holy Communion	
Sunday 15th	10.00	Holy Communion		
Sunday 15th	11.00			Holy Communion
Tuesday 17th	9.30		Morning Prayer	
Wednesday 18th	9.30	Holy Communion		
Thursday 19th	9.30			Morning Prayer
Sunday 22nd	8.00	Holy Communion BCP		
Sunday 22nd	9.30		Holy Communion	
Sunday 22nd	10.00	Holy Communion		
Sunday 22nd	11.00			Holy Communion
Tuesday 24th	9.30		Morning Prayer	
Wednesday 25th	9.30	Holy Communion		
Thursday 26th	9.30			Morning Prayer
Sunday 29th	8.00	Holy Communion BCP		
Sunday 29th	9.30		Holy Communion	
Sunday 29th	10.00	Holy Communion		
Sunday 29th	11.00			Morning Prayer
Tuesday 31st	9.30		Morning Prayer	
November				
Wednesday 1st	9.30	Holy Communion		
Thursday 2nd	9.30			Morning Prayer

East Budleigh Community Shop



Serving Our Community



Opening hours: Monday to Friday 9 am to 6 pm. Tuesday 9 am to 7 pm
Saturday 7 am to 4 pm. Sunday 8 am to noon

2024 WILDLIFE CALENDAR



Male Redstart

Now on sale in the Community Shop
for only £7, an ideal gift – with envelope!

www.eastbudleighshop.co.uk

telephone: 01395 445550

email: eastbudleighcommunityshop@gmail.com

Wi Fi available